



# **SAMPLE GEMS REVEAL: HIDDEN POWER IN YOUR DATAFLEX**

**MARCIA BOOTH**

# STUDIO GEM

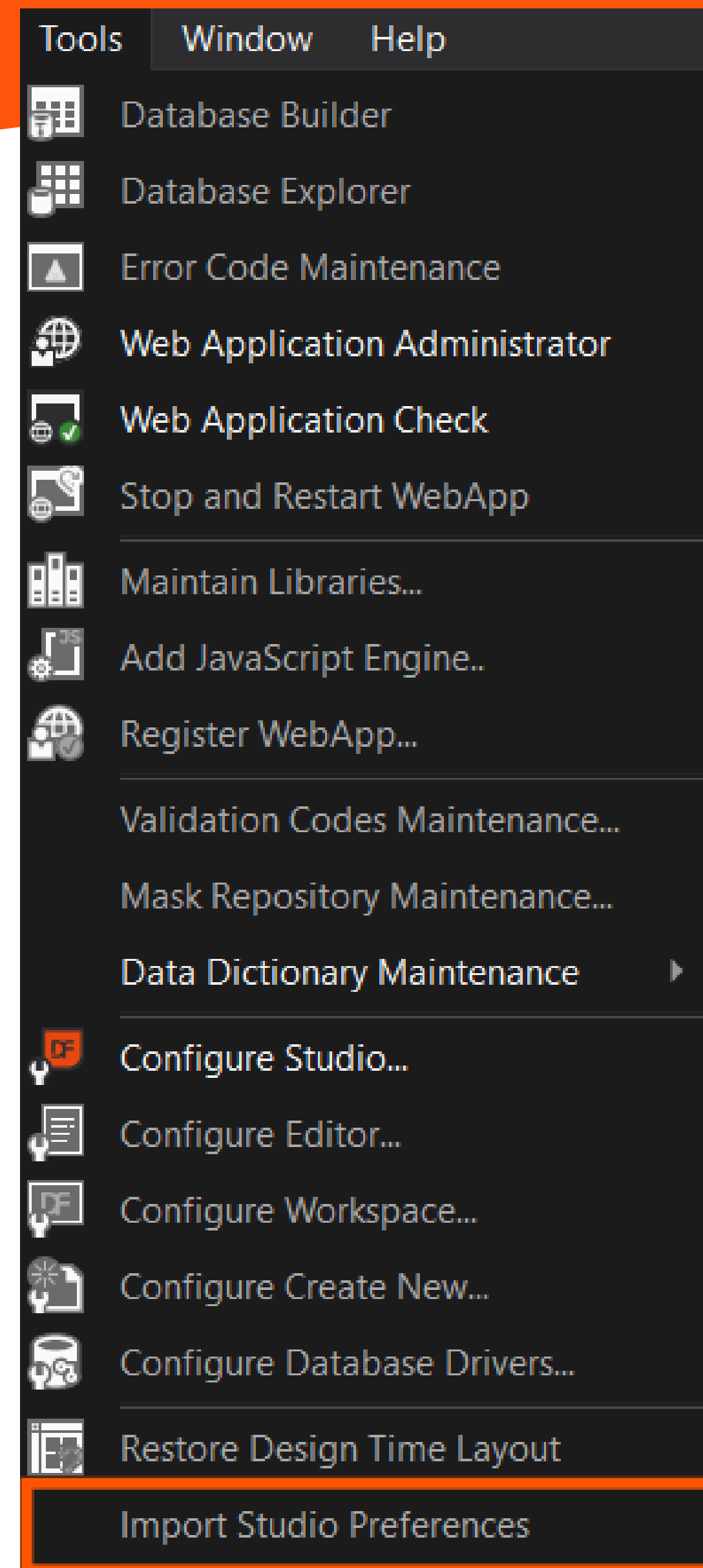


# STUDIO GEM

## IMPORT/EXPORT STUDIO PREFERENCES

Up to DataFlex 25.0:

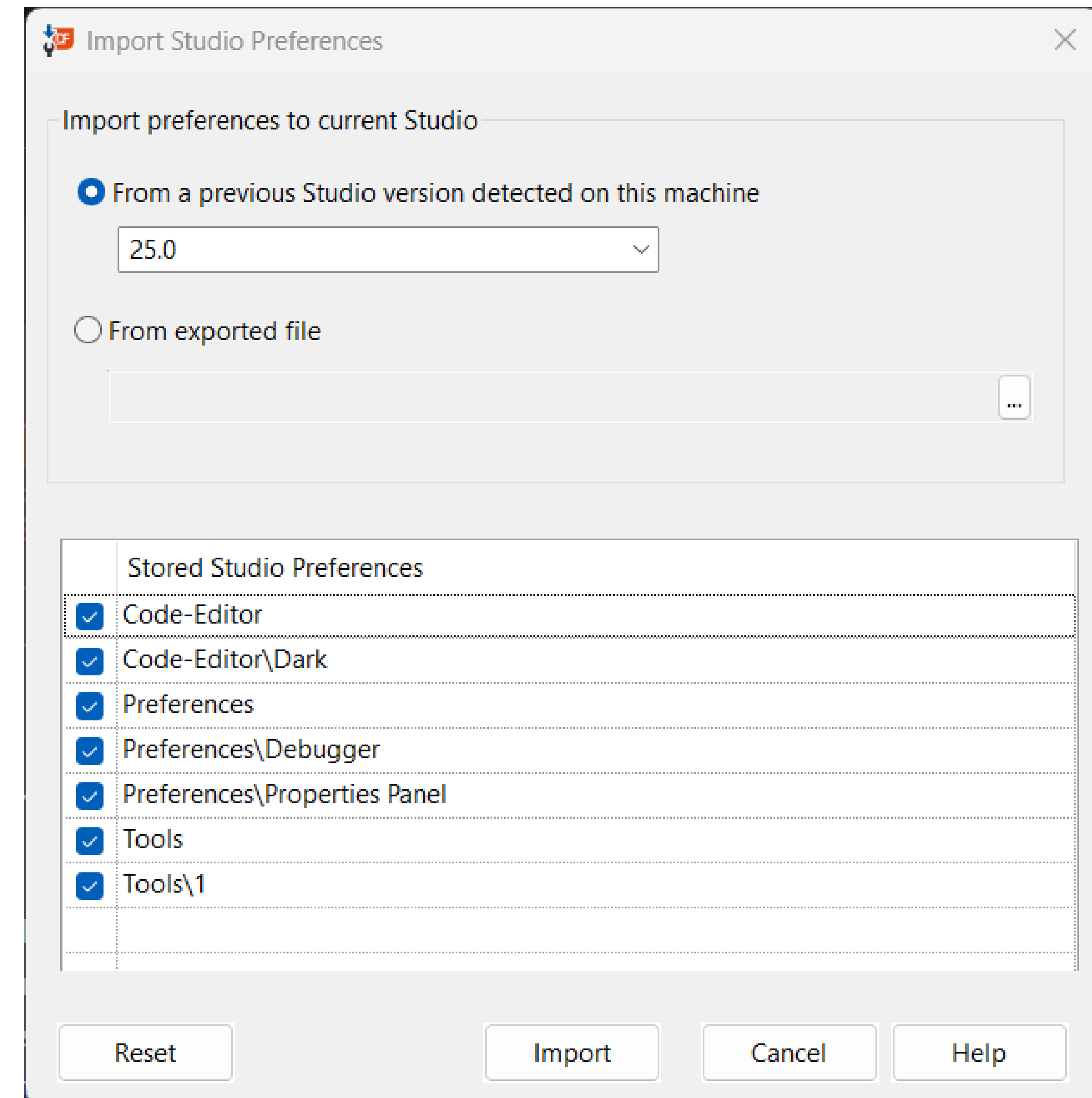
- Import Studio Preferences saved in the registry
- Only immediately previous versions of the Studio
- No export option



# STUDIO GEM

## IMPORT/EXPORT STUDIO PREFERENCES

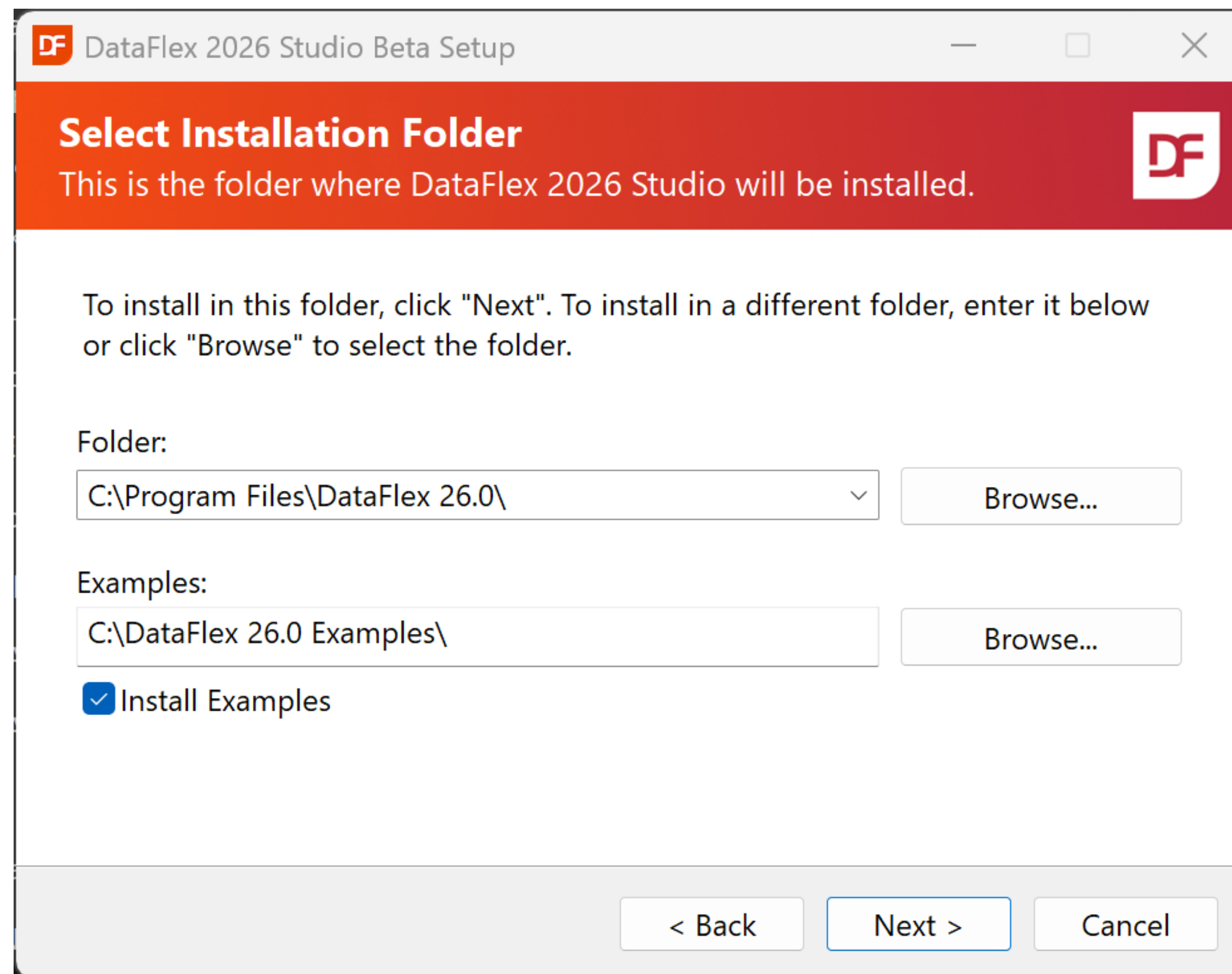
- Import Studio Preferences saved in the registry
  - Previous versions of the Studio or exported file
  - Limit to DataFlex 19.1 (6 versions earlier)
  - Allows selection of stored preferences to import
  - Reset option - removes stored preferences for current version; applied when reopening the Studio
- Export current stored preferences to a json file
  - ExportedStudioPreferences.json
  - Allows for selection of destination directory
  - All stored preferences will be exported



# EXAMPLE GEMS



# INSTALLED EXAMPLES INSTALLATION



**DataFlex 2026 Studio Beta Setup**

## Select Installation Folder

This is the folder where DataFlex 2026 Studio will be installed.

To install in this folder, click "Next". To install in a different folder, enter it below or click "Browse" to select the folder.

Folder:

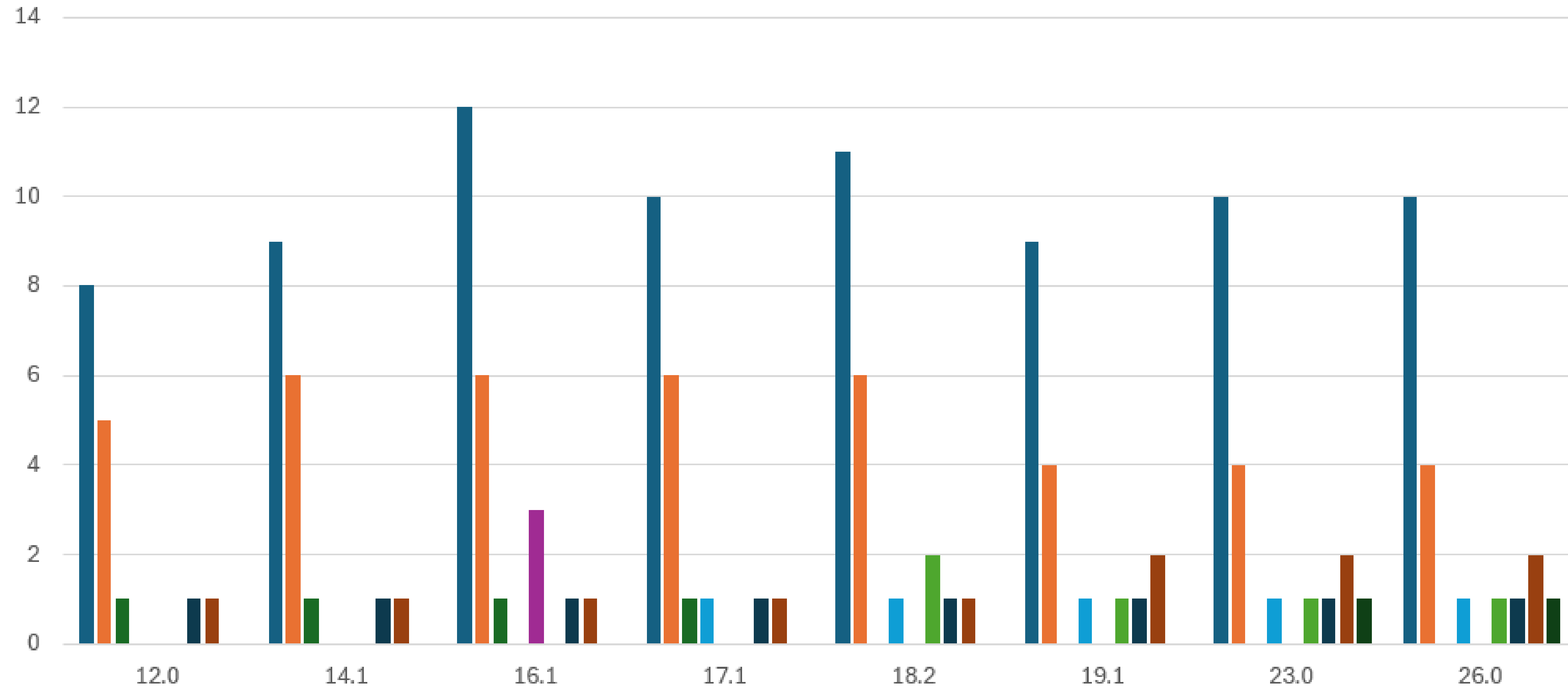
Examples:

Install Examples

< Back   Next >   Cancel

# INSTALLED EXAMPLES THROUGH TIME

Examples through Time



# INSTALLED EXAMPLES CHANGES THROUGH TIME

Some of the changes we made to installed examples include:

Consolidated	Removed	Added	Catch All
<ul style="list-style-type: none"><li>• Order Tab</li><li>• Web Services Clients</li></ul>	<ul style="list-style-type: none"><li>• ASP</li><li>• Skinning</li><li>• Contact Management</li><li>• Wines Inventory</li></ul>	<ul style="list-style-type: none"><li>• DataFlex Reports Demo</li><li>• WebOrder</li><li>• WebOrderMobile</li><li>• FlexTron</li></ul>	<ul style="list-style-type: none"><li>• WebOrder</li><li>• Specialized Components</li></ul>

## INSTALLED EXAMPLES GOOD TO KNOW

Some things you can  
find in the **Specialized  
Components** workspace

**Alias:** SalesP.vw view shows how to use local DD relationships; includes excellent comments explaining how it works

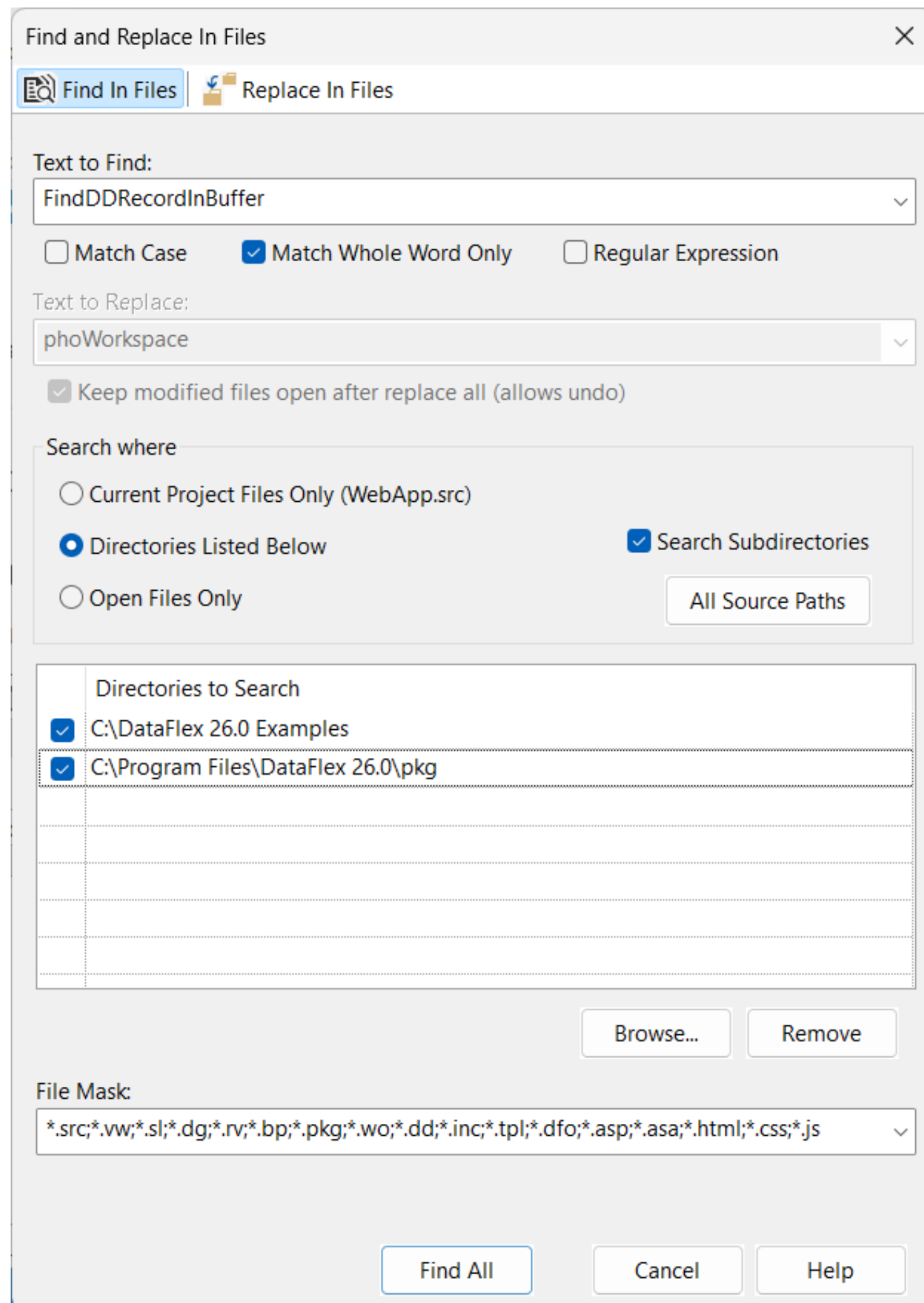
**XML:** XML-1.vw and XML-5.vw show how to validate XML using XSD

**Collate:** DemoCollate.vw shows how ICU collation is applied and includes links and information about Unicode and Collation

**WebServices:** CheckBook.vw uses our NumberConversion web service to convert number to dollars (number to words)

**WebAppLog:** SelectWebApp.dg shows how we can open a log from disk or from a running webapp

# INSTALLED EXAMPLES WHERE TO FIND



- Go to Definition (Ctrl+Shift+G; Ctrl+Click)
- Find in Files
- Search the new Help
- Ask AI



## OTHER EXAMPLES DOWNLOAD

- On Download Center
  - PassPhrase
  - SecurityMatters
  - Plato
- GitHub DEMO workspaces
  - Example on how to use a library
  - Showcase technique

# THE REVEAL



***diPronto***  
Powered by DataFlex

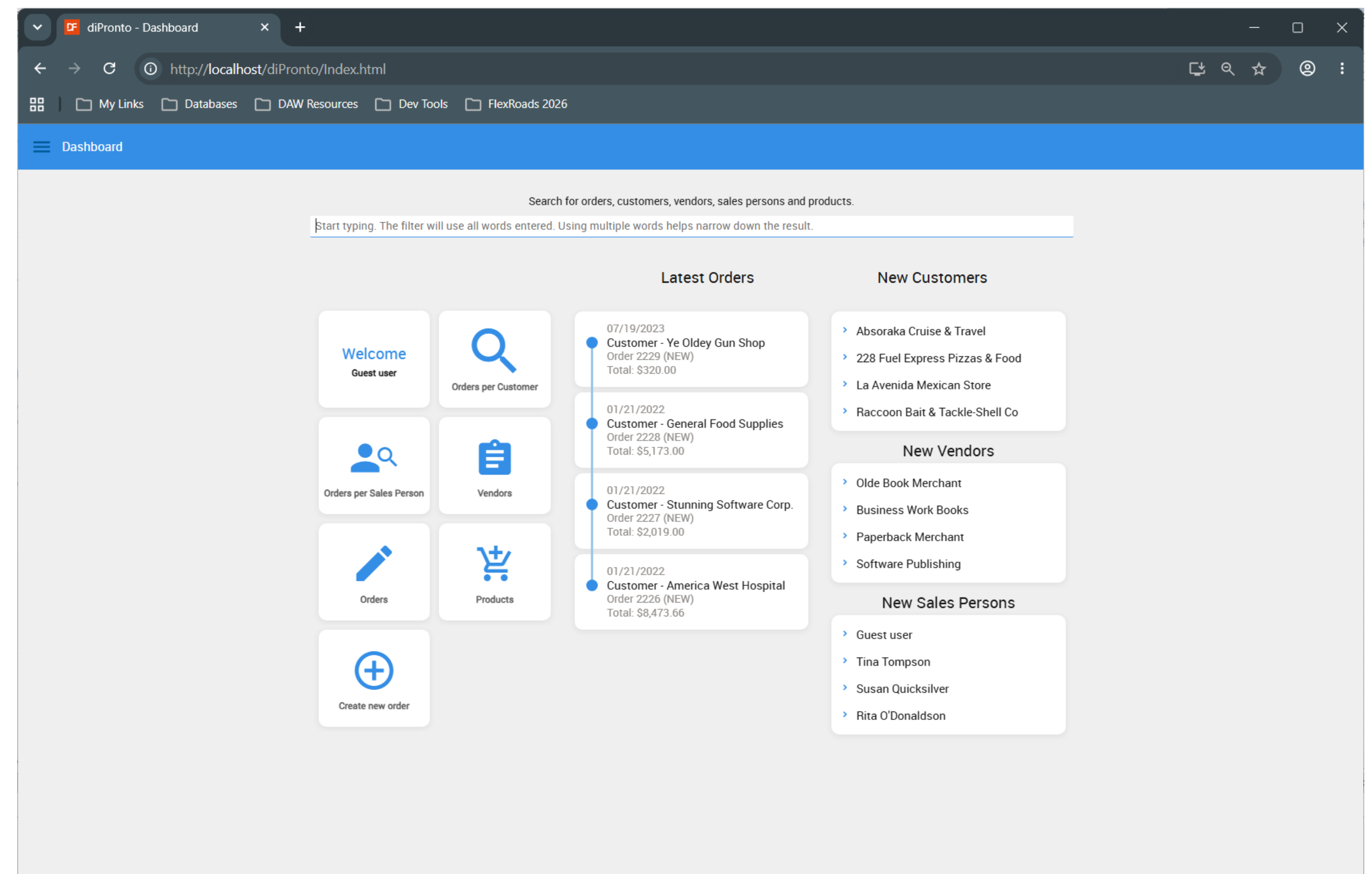


# THE REVEAL

## A NEW EXAMPLE



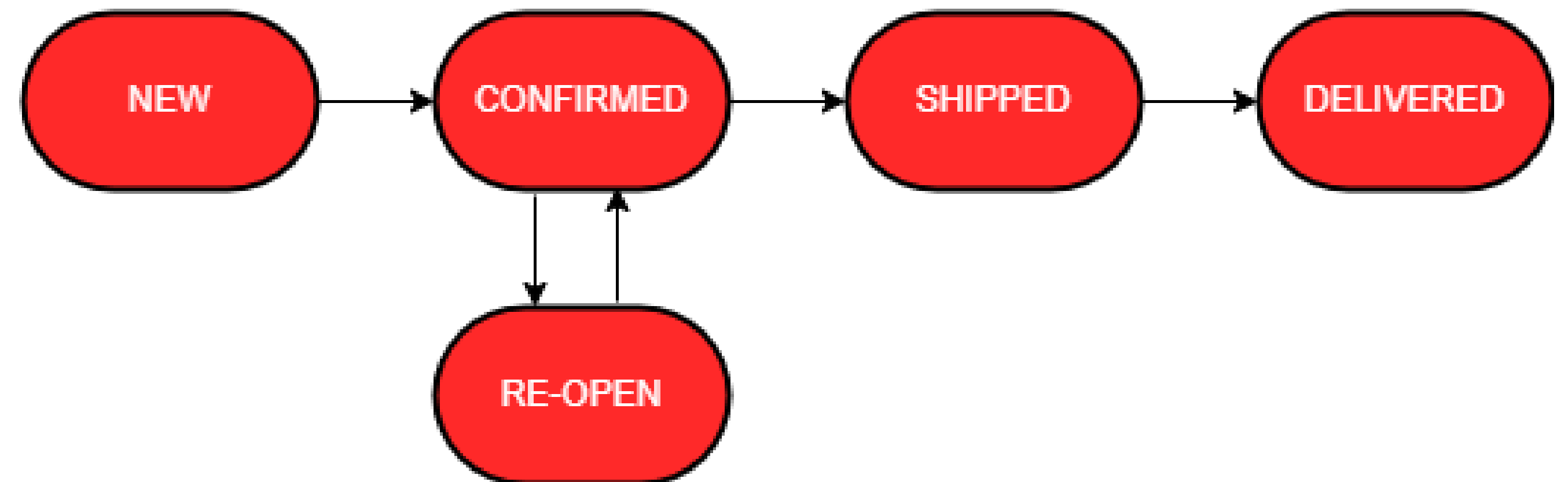
- A revamped and expanded version of the WebOrderMobile example built to showcase a mix of DataFlex features and available packages



# DIPRONGO WORKFLOW



- Orders automatically move through the flow
- Different options and controls available depending on the order current status
  - Only Confirmed orders may be reopened
  - Once Delivered, users may print invoice



# DIPRONGO FEATURES



- MS-SQL database
  - ESQL
  - no system tables; codemast/codetype used by tools only
- New database structure
  - Contact table (Customer, Vendor, SalesPerson)
  - Address Tables
  - Product table instead of Inventory
  - ProductCategory and ProductSaleHistory tables
- More information and customizations – and lots of comments throughout the code!
  - Customer preferences (shipping)
  - Filtering, searches and grouping
  - New tiles and quick search bar on the dashboard (cWebSuggestionForm + ESQL)
  - New DataFlex Reports reports
  - Web service for retrieving order data

# DIPRONTO PACKAGES



- DataFlex Reports DEMO
- Web UI Server
- Secure Upload
- Password control (SECMOD)

# DIPRONGO AVAILABILITY



- Repository
  - Source code
  - Documentation
    - Overview of features
    - Developer roadmap
  - Installation script
  - Refreshed data
- DataFlex-dev on GitHub
  - We will announce when available

**/\*THANK YOU\*/**

